



Dana-Farber
Cancer Institute



Brigham Cancer Center

Housing Resource Guide

for Stem Cell Transplant
and CAR-T Patients





Homewood Suites

Inn at Longwood

Hampton Inn

About

There are a variety of short-term accommodations in the Boston area, including hotels, short-term furnished apartments, and community living. We recommend you begin researching options as soon as it is clear you will be receiving a stem cell transplant or CAR T-cell therapy, as lodging options in Boston and the Longwood Medical Area are limited.

Contact your insurance company to ask whether a lodging reimbursement is offered in your plan.

If you are worried about the cost of lodging or need help navigating these options, call a Dana-Farber resource specialist at 857-215-1796.

[About](#)

[Hotel Options](#)

[Apartment Options](#)

[Other Housing Options](#)

[Parking](#)

Hotel Options

Dana-Farber has agreements with the following hotels. These hotels agree to follow our cleaning guidelines to provide a safe environment for patients after stem cell transplant or CAR T-cell therapy. If you have questions about specific cleaning guidelines, please ask for the general manager at the front desk.

If you are unable to make a reservation at these hotels, there are other options. Contact the resource specialist for more information.

	DISTANCE FROM DANA-FARBER	KITCHENETTE/FREEZER*	LAUNDRY	TRANSPORTATION TO DANA-FARBER	PRICE RANGE** PER NIGHT	CONTACT
Homewood Suites	0.9 miles	✓	✓	✓	\$179–\$499	111 Boylston Street, Brookline 617-232-1487
Inn at Longwood	0.1 miles	✓			\$209–\$350	342 Longwood Avenue, Boston 617-731-4700
Hampton Inn***	2.5 miles	✓	✓	✓	\$169–\$279	811 Massachusetts Avenue, Boston, 617-445-6400

The availability of these hotels depends on the time of year and your needs. We recommend booking rooms as soon as possible and familiarizing yourself with each hotel's cancellation policy.

*Although all hotels have a freezer and kitchenette, they can vary by size. We recommend asking about these amenities in advance to be sure to they meet your specific needs.

**Price range includes suites, which are available at all hotels listed. When booking, ask hotels for the medical rate and about extended stay discounts. Prices do not include parking, which is available at all locations listed, and may change based on the time of year.

***The Hampton Inn allows you to store frozen food in a communal kitchen, but does not have individual kitchenettes in each room.

About

Hotel Options

Apartment Options

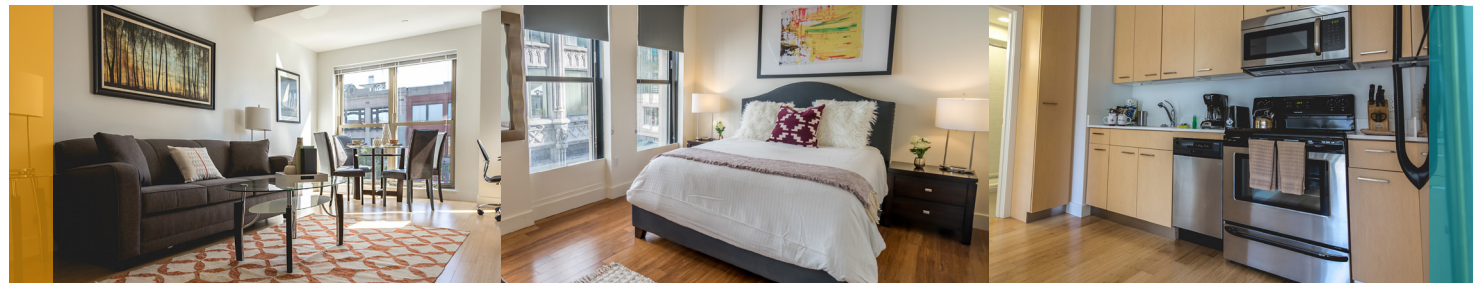
Other Housing Options

Parking

Apartment Options

	DISTANCE FROM DANA-FARBER	KITCHENETTE/FREEZER	LAUNDRY	CONTACT
Compass Furnished Apartments	Varies	✓	✓	compassfurnishedapartments.com/dana-farber 617-849-9557
Furnished Quarters	Varies	✓	✓	furnishedquarters.com 617-236-4908 x1008

A shuttle to/from Dana-Farber is not provided by these apartment complexes.



Compass Furnished Apartments



Furnished Quarters

Because of the variability in apartment location and amenities, price may vary widely. Contact each apartment complex for price information.

Apartments are cleaned very well between guests, but no housekeeping services are provided during individual stays. Caregivers are responsible for cleaning during the stay (however patients themselves should avoid cleaning). If you have specific questions about cleaning, please ask at the time of booking.

About

Hotel Options

Apartment Options

Other Housing Options

Parking

Other Housing Options

Astrazeneca Hope Lodge

The Astrazeneca Hope Lodge is a **free housing resource operated by the American Cancer Society** that is available to patients who: are traveling more than 40 miles for their outpatient appointments; have appointments three days/week; and require a stay of at least three nights. Family members may not stay at Hope Lodge without an accompanying patient.

For more information on staying at Hope Lodge, please contact your Resource Specialist. Please note, the Hope Lodge typically has a waitlist of up to two months.

The Hope Lodge provides:

- 40 private patient suites, each with a sitting room, bathroom, and bedroom with two beds
- Common areas including a library, courtyards, and a meal preparation and dining area
- Transportation to treatment
- The on-site resources of an American Cancer Society Quality of Life Center

Fisher House of Boston 508-728-8781 fisherhouseboston.org

Fisher House of Boston offers free short-term housing to military and veteran families in the Longwood Medical Area. A representative from the organization can work with patients or families directly to discuss available options. The organization works with a hotel that is within walking distance of the Dana-Farber and Brigham and Women's hospital locations.

Hospitality Homes 888-595-4678 hosp.org

Hospitality Homes provides **short-term housing** in volunteer host homes and donated apartments **for caregivers, families, and friends of patients** seeking care at Dana-Farber. While this is an option for patients **prior** to their stem cell transplant or CAR T-cell therapy, it is not suitable for patients post-transplant or CAR T-cell therapy.

Hospitality Homes provides a trained host who will offer you a clean and comfortable place to sleep and access to a bathroom. To stay at Hospitality Homes, you need to complete an application online or by phone. The approval process takes about two weeks. The cost is free with a suggested donation of \$25/night to the host.



Astrazeneca Hope Lodge

About

Hotel Options

Apartment Options

Other Housing Options

Parking



Parking

The parking rate for the Dana-Farber garage is \$12/day for patients. Family members who are visiting patients in the inpatient hospital should indicate to the parking attendant that they are a family member to obtain this rate as well.

Parking assistance for the Dana-Farber garage is available for income-eligible patients during their outpatient appointments. Please contact your resource specialist at 857-215-1796.

Parking assistance for the Dana-Farber garage is also available for extended lengths of stay (10 or more consecutive days) in the inpatient hospital. To learn more or to apply for inpatient parking assistance, call the Dana-Farber Patient Parking Program at 617-632-5110 or email dfcpatientparking@partners.org.

[About](#)

[Hotel Options](#)

[Apartment Options](#)

[Other Housing Options](#)

[Parking](#)

